

Land of the Risen Son

イエス・キリストは日本を愛する

(Jesus loves Japan)

Interesting Facts

Garbage...

Each municipality has slightly different requirements for sorting garbage and recycling. As the various trucks drive by, they play different songs depending on the type of trash that they're collecting.

In Itoman...

(see right)

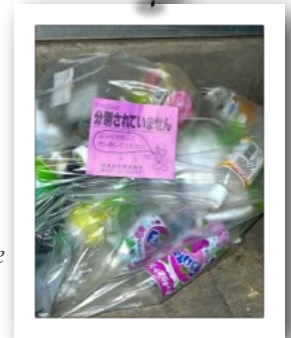
We separate our garbage into PET bottles, glass, metal, burnables, and non-burnables. All plastic bottles are recycled without lids. Glass must not be broken (otherwise it is categorized as non-burnable), and be separated from metal and plastic parts.



Declined pickup...

(see right)

If you put the wrong item into a recycling bag, the bag will be declined. The garbage man will post a note on the bag indicating your mistake. We've made two mistakes in 2 1/2 years. Are those tags ever hard for us to understand!



Update: A Singular Sojourn (Peter & Valerie Limmer)

What's Cooking?

Our Yaku Yaku Cooking Club has been gaining steam as we continue to build relationships with the people in our community. At our first meeting, five people attended. Soon after attendance jumped to 17. At the end of our most recent club, there were 28 people (not including us)! As we're sure you can imagine, it was quite hectic trying to make sure that everyone felt included. But, as Peter reminds me, in this culture the most important thing is to spend time together. In Japan, most activities centre around developing relationships, and Yaku Yaku Cooking Club is no different. Many of the attendees were mothers of the children from Kids' ESL. It was wonderful to be able to converse and connect with several of them more deeply than in the past.

Some of you have indicated interest in knowing the types of things that we make at Yaku Yaku. Last time, we made a full meal. The dishes were:

- Cream Cheese Onion Chicken (using a slow cooker, which was a novelty)
- Sautéed Asparagus and Mushrooms
- Tomato Basil Mozzarella Penne
- Rocky Road Bars for dessert

Since the World Cup will be taking place in June, I'm planning to centre this month's Yaku Yaku around foods that



Everything is ready for cooking club...

North Americans eat while watching sports (e.g., wings, special dips for chips/veggies, quesadillas, nachos, and so on).

Ministry Challenges

One of our other regular ministries is an English-language service, held on the 1st and 3rd Sundays of each month. This service is an initiative suggested by Higa sensei, but is pretty sparsely attended. We are currently in the process of trying to figure out ways to get more people out. Peter uses simple language in his sermons, but learning from the Bible in a foreign language can be challenging. Generally speaking, people need to have an intermediate level of English capability to get something meaningful out of this. However, the majority of the Japanese public tends to be at a beginner level. To help, I've started putting some simple Japanese translations onto our PowerPoint slides. Some say that this helps them to understand better.

Bible ESL

Meanwhile, our Bible ESL class continues to go well. The Fletcher family is still attending, and it's been really interesting to see Fleming's marvellous spiritual instincts as he answers some of our more thought-provoking questions on the Bible stories. Right now we're working our way through the stories of Moses (in the books of Exodus and Numbers).

Sometimes in ESL class we ask the students to put themselves in the characters' shoes and imagine their own actions or feelings in the Bible story situations. Until recently, Fleming had been mildly reticent when it came to answering questions about trusting God in certain Biblical situations. But during the last class, which revolved around the stories of God providing manna and water for the Israelites in the desert, he exclaimed that if he had seen God part the Red Sea and care for him as the Israelites did, he would have trusted God.

Right now, to some degree the lessons in these Old Testament stories are theoretical, since God's rescue plan was for the Israelites specifically. We are planning to start introducing the students to Jesus in September, and are really excited to show Fleming the things that Jesus did for him, personally.



Making dessert. Everyone loves chocolate!



Time to eat our cooking.



Packed house for Yaku Yaku Cooking Club.



Church family bowling event.



Almost everyone from the church came... and so did some other friends and family!



Checking out the scores.

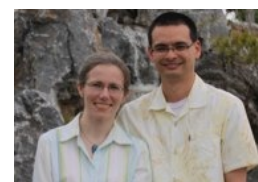


GOM President Brian Albrecht visited us for a few days in May.

Contact Information

Thank You!

Thank you for your interest in our work. We send out newsletters every two months. If at any point you decide that you don't want to receive them anymore, just write or email us (japan@peterandvalerie.com).



Correspondence can be sent to:

Peter & Valerie Limmer
Sunnycourt 207, Apartment C-3
3-207 Nishizaki,
Itoman-shi, Okinawa, 901-0306
Japan

E-mail:
japan@peterandvalerie.com

GOM Main Offices

GOM Canada
PO Box 1210
St. Catharines, ON
L2R 7A7

GOM USA
P.O. Box 2010
Buffalo, NY
14231

